

Ankara Pressure Vessels & Process Equipment

ANKA MULTI BAG FILTER SERIES

MB Series — SMB / 11S2



Technical Specifications

FLOW RATES
440
m³/h max

Number of Bag Filters
Range
1 to 11

STANDARD DESIGN PRESSURE
1 -50
barg

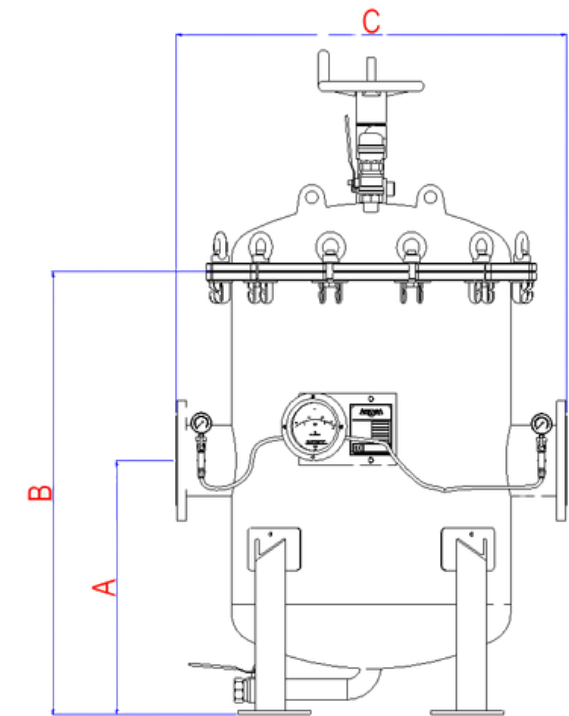
Working Pressure
-33 / +45
°C

FILTRATION Area
4350–50,000
µm

**HORIZONTAL &
VERTICAL
ASSEMBLY**

The **ML Series** consists of high-performance bag filter systems designed for the filtration of airborne particles in industrial applications requiring precise filtration. With a filtration capacity ranging from 5 to 500 microns, it offers a wide range of applications.

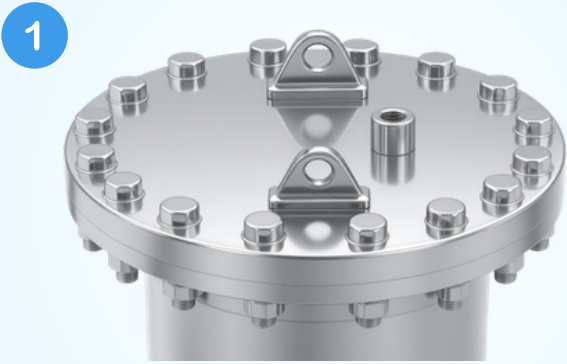
Filter Model	Number of Bags	Inlet/Outlet DN	Filtration Degree (mic)	Flow Rate m ³ /h	Filtration Area cm ²	Weight kg (lbs)	Air Vent	Drain	Lid Closure System	Dimensional Data		
										A	B	C
*SMB-80	1	DN 80	5	40	4,350	53	1/4"	1"	Type 1	1,197	1,282	370
MB-2S2	2	DN 65	5	80	8,700	220	1"	1 1/2"	Type 2	600	1,050	680
MB-3S2	3	DN 65	5	120	13,050	225			Type 2	600	1,050	680
MB-4S2	4	DN 150	5	160	17,400	290			Type 2	600	1,050	780
MB-5S2	5	DN 150	5	200	21,750	330			Type 2	600	1,050	922
MB-6S2	6	DN 150	5	240	26,100	410			Type 2	730	1,105	1,040
MB-7S2	7	DN 150	5	280	30,450	415			Type 2	730	1,105	1,040
MB-8S2	8	DN 150	5	320	34,800	485			Type 2	730	1,105	1,100
MB-9S2	9	DN 200	5	360	39,150	610			Type 2	732	1,115	1,164
MB-10S2	10	DN 200	5	400	43,500	615			Type 2	732	1,115	1,164
MB-11S2	11	DN 200	5	440	47,850	620			Type 2	732	1,115	1,164



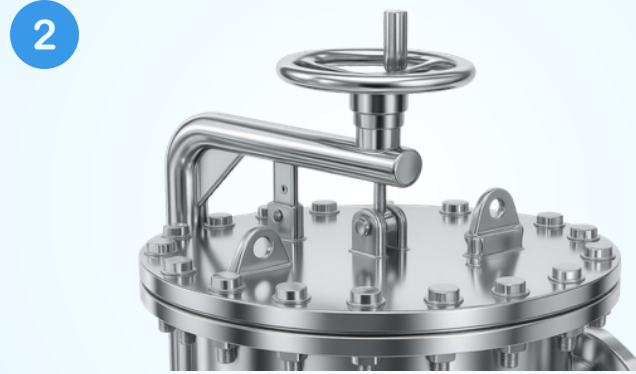
NOTE: All models are manufactured with a 304 stainless steel (1.4301) body. The nominal pressure for all models is PN 10. The flange standard is EN 1092-1. Please contact us for special material and pressure requirements.
*SMB-40/50 and 80 sizes are available.

A. LID CLOSURE SYSTEMS — Select by Model Size

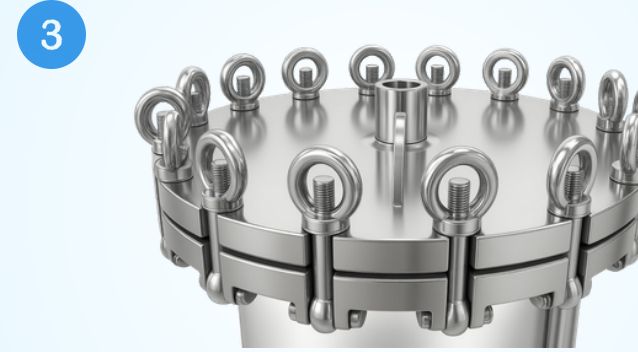
STANDARD BOLTED COVER SYSTEM



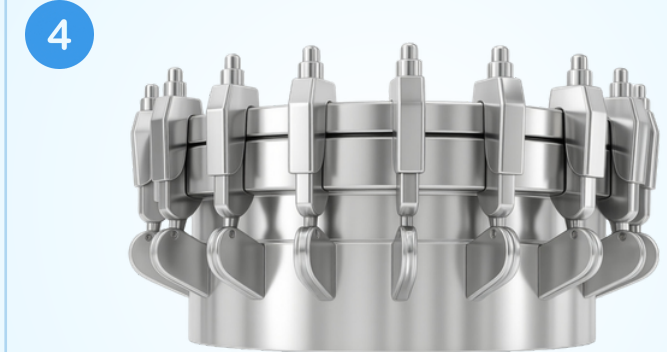
DAVIT LID MECHANISM



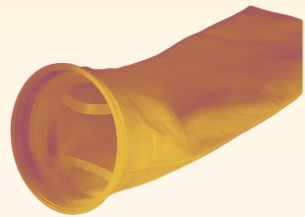
SWING-EYE BOLTS



RATHMANN CLAMPS



B. BAG FILTERS - LIQUID FILTRATION



Available Ratings:

- Nonwoven: 1, 5, 10, 20, 25, 50, 100 micron
- Monofilament: 25, 50, 100, 150, 200, 300, 500 micron

Material Options:

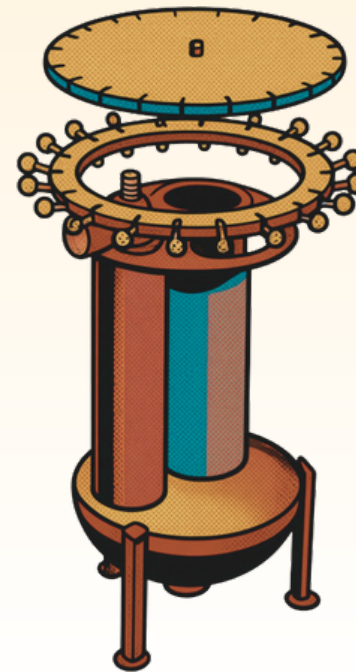
- Nonwoven Fabric: Polypropylene, Polyester
- Woven Fabric: Monofilament Polyester, Multifilament Polyester, Multifilament Polypropylene, Multifilament Cotton

Filter Head:

- Special profile polypropylene ring or stainless steel ring

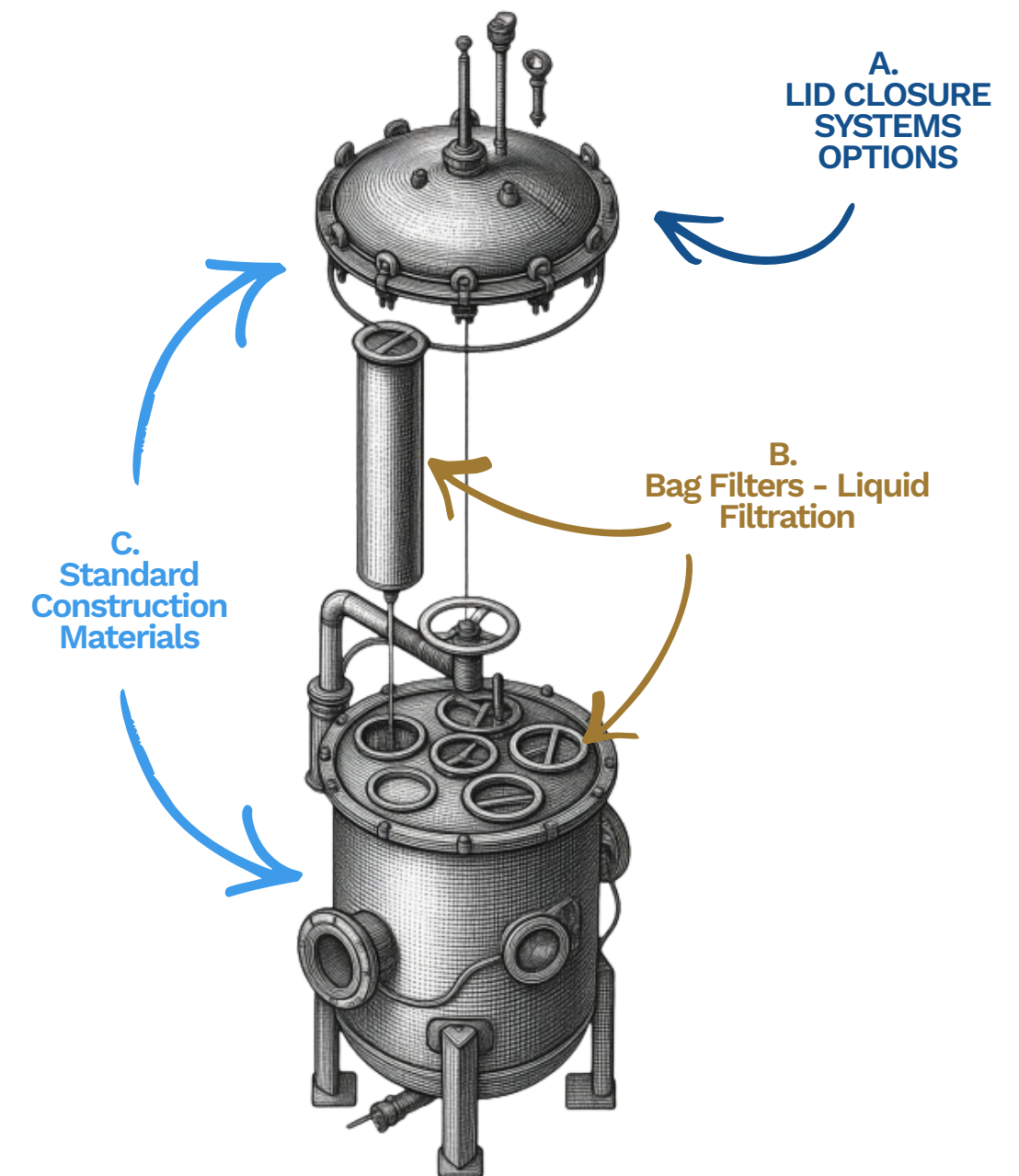
Features:

- CE marked, internationally barcoded
- Approved by Turkish Ministry of Health
- Registered in National Information Bank
- Wide range of chemical resistance options
- Various temperature ranges (90-280°C)



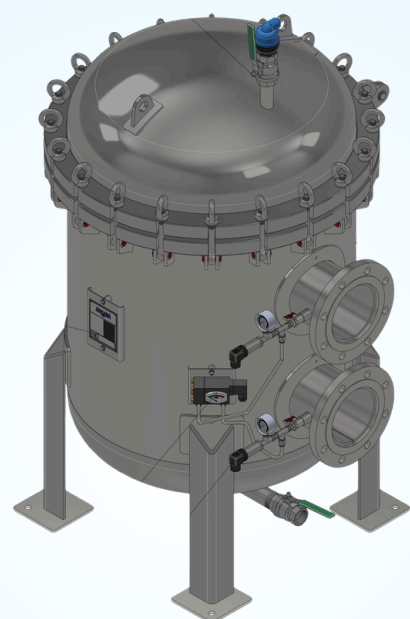
C. STANDARD CONSTRUCTION MATERIALS

Housing & Lid Materials	Seals & Gaskets Materials	Flanges & Connections Materials
<ul style="list-style-type: none"> ✓ Carbon Steel with epoxy coating ✓ Stainless Steel 304/304L ✓ Stainless Steel 316/316L ✓ Super Duplex (special applications) 	<ul style="list-style-type: none"> ✓ NBR (Nitrile Rubber) - standard ✓ EPDM (for water applications) ✓ PTFE (chemical resistance) ✓ Viton (high temperature) 	<ul style="list-style-type: none"> ✓ EN1092-1 PN10/16/25/40 FF ✓ ASME B16.47 for large sizes ✓ Custom flange standards available



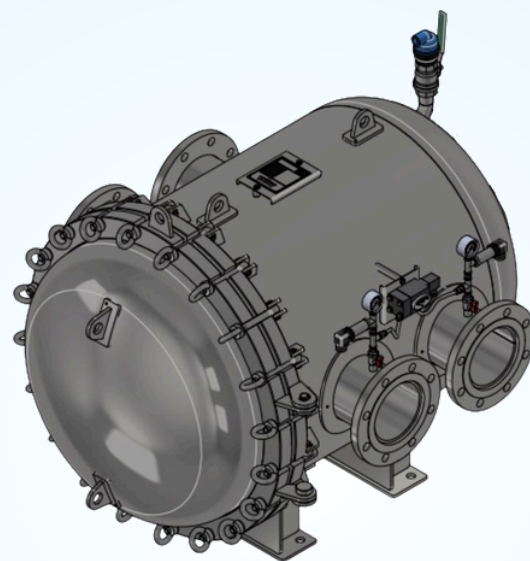
D. Placement Options

Vertical Placement



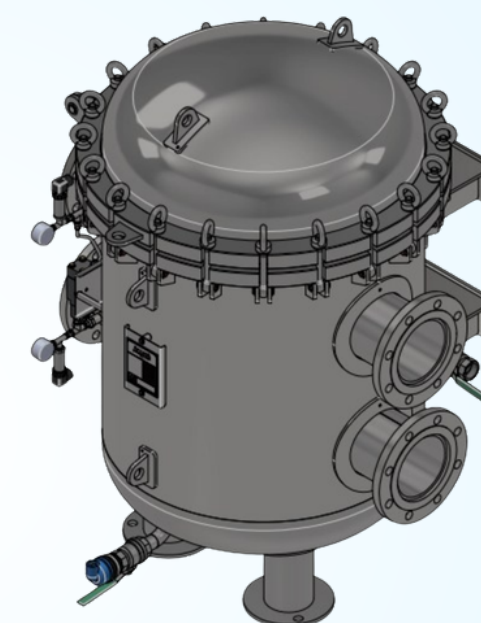
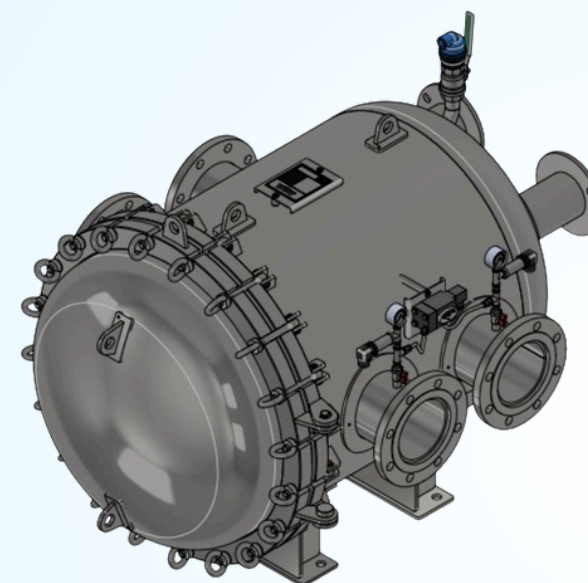
- Ideal For: Narrow areas requiring space-saving and standard filtration processes.
- Features: Available with legs or mounting lugs; provides easy lid opening and quick bag replacement.

Horizontal Placement



- Ideal For: Areas with restricted ceiling height or high-capacity multi-bag systems.
- Features: Allows for more ergonomic replacement of heavy filter bags and ensures ease of maintenance.

Flexible Placement Design



- Bi-directional Mounting: Fully compatible with both floor legs and wall/frame mounting brackets.
- Angular Flexibility: Inlet-outlet orientations are optimized for maximum flow efficiency in both placements.
- Ease of Maintenance: Easy access to filter bags and drainage lines in both operating modes.

E. Magnet with Holder

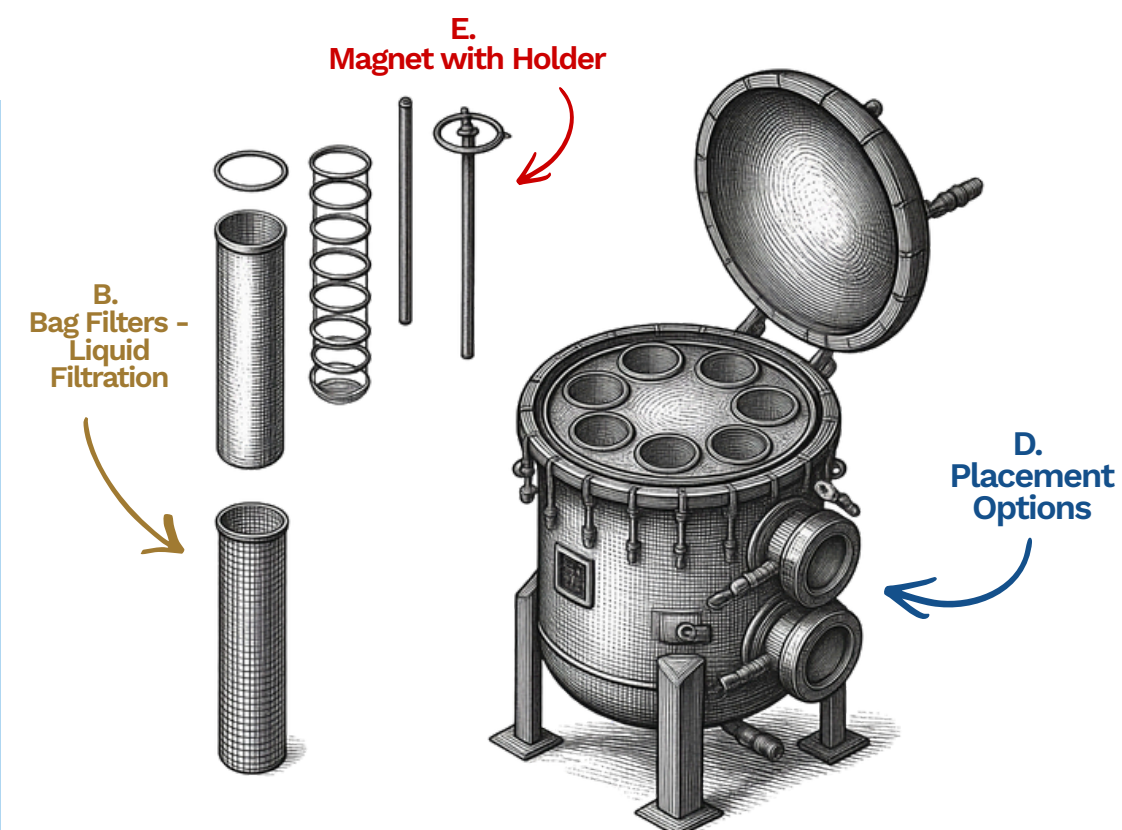
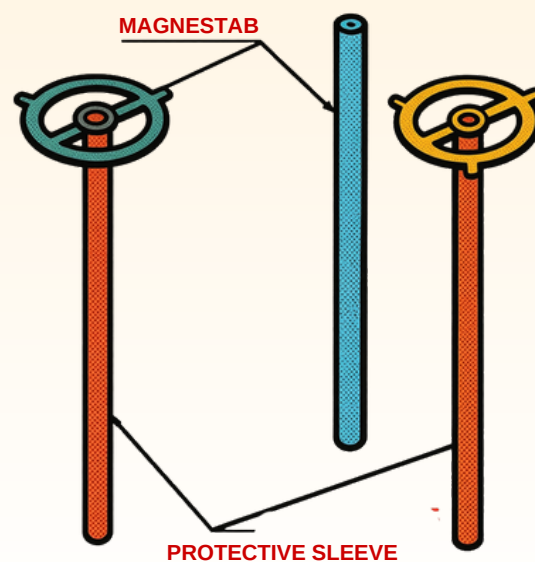
High-performance rod magnet system equipped with a protective sleeve, specifically designed to capture metallic particles and impurities within filtration processes.

Technical Specifications:

- Type: Rod Magnet With Protective Sleeve
- Magnet Material: N35UH (Premium rare earth mineral / Neodymium)
- Protective Sleeve Material: Stainless Steel
 - Magnetic Power: 4700 Gauss at 32mm
 - 2500 Gauss at 60mm
- Dimensions: 32mm Diameter - 500mm Length

Operating Conditions:

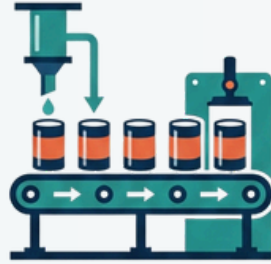
- Operating Medium: Saturated Steam / Condensate
- Maximum Operating Pressure: 16.0 Bar
- Maximum Operating Temperature: 180 °C (Ultra-high temperature resistant grade)



Industries We Serve



Sewage Treatment Industry



Food Processing Facilities



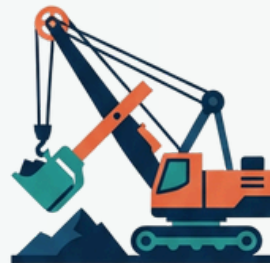
Cement Manufacturing



Chemical Plants



Petrochemical



Mining Operations



Pulp and Paper



Steel Mills

Why Choose Us



Engineering Excellence

Over 20 years of experience in pressure vessel and filtration equipment design and manufacturing. Our engineering team provides custom solutions tailored to your specific requirements.

Quality Assurance

All products manufactured to international standards (ASME, PED, EN13445) with comprehensive testing and third-party inspection. Full material traceability and documentation.



Global Support

Technical support, installation guidance, and after-sales service provided worldwide. Extensive spare parts inventory and fast delivery to minimize downtime.

Get in touch with us today!

EMAIL

info@pressurevesselequipment.com

PHONE

+90 541 925 20 14

WEBSITE

<https://www.pressurevesselequipment.com>

ADDRESS

İvedik OSB, İvedik Organize Sanayi Bölgesi,
1364. Sk. No:12, 06378 Yenimahalle/Ankara

Head Office
İvedik OSB, İvedik Organize Sanayi Bölgesi, 1364. Sk. No:12, 06378 Yenimahalle/Ankara

Manufacturing Facility
Malıköy Başkent OSB, 19. Cd. No:58, 06909 Sincan/Ankara

