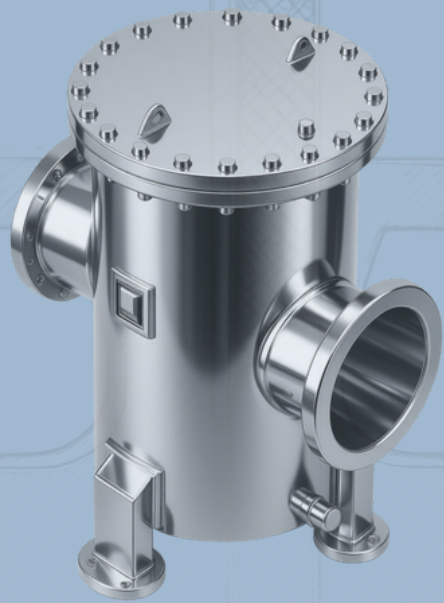


Ankara

Pressure Vessels & Process Equipment

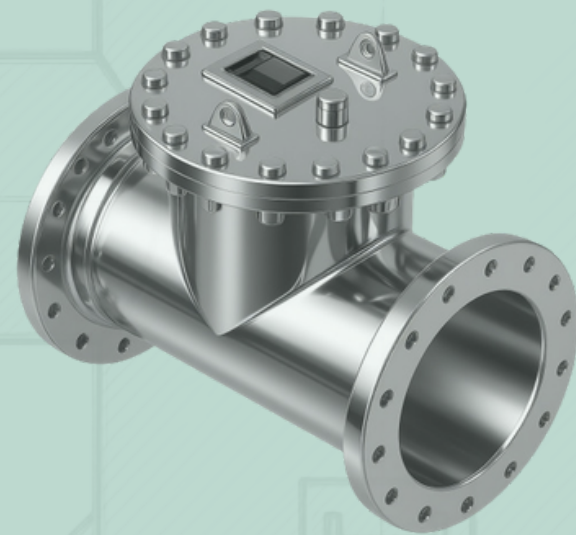
ANKA STRAINER SERIES

Basket Strainers



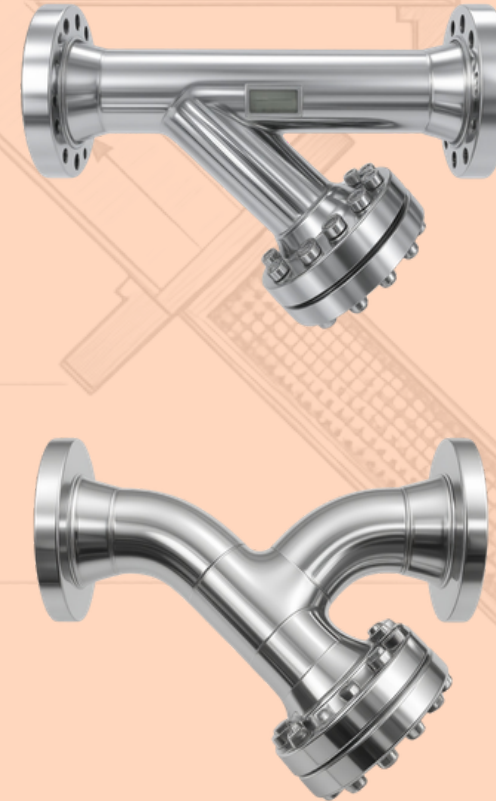
Page: 2 - 4

T-Type Strainers



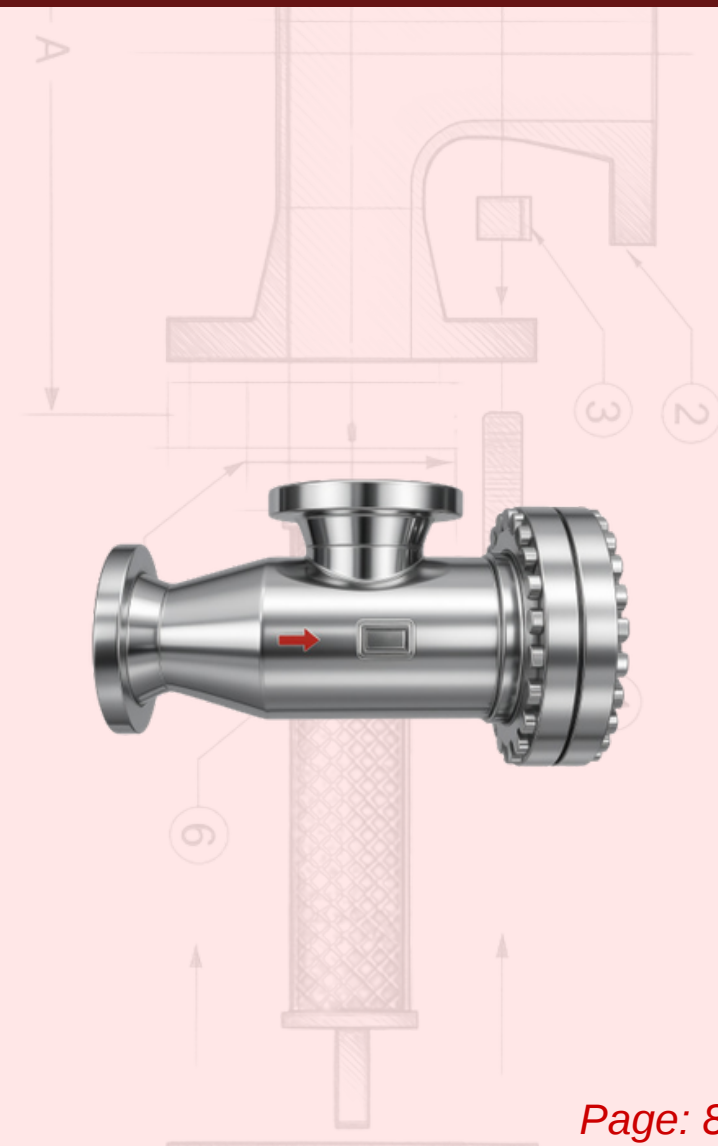
Page: 5 - 6

Y-Type Strainers



Page: 7

Flow T-Type Strainers



Page: 8



Technical Specifications

FLOW RATES
4,500
m³/h max

CONNECTION
DN32–DN800
1 1/4" to 32"

STANDARD DESIGN PRESSURE
100
barg

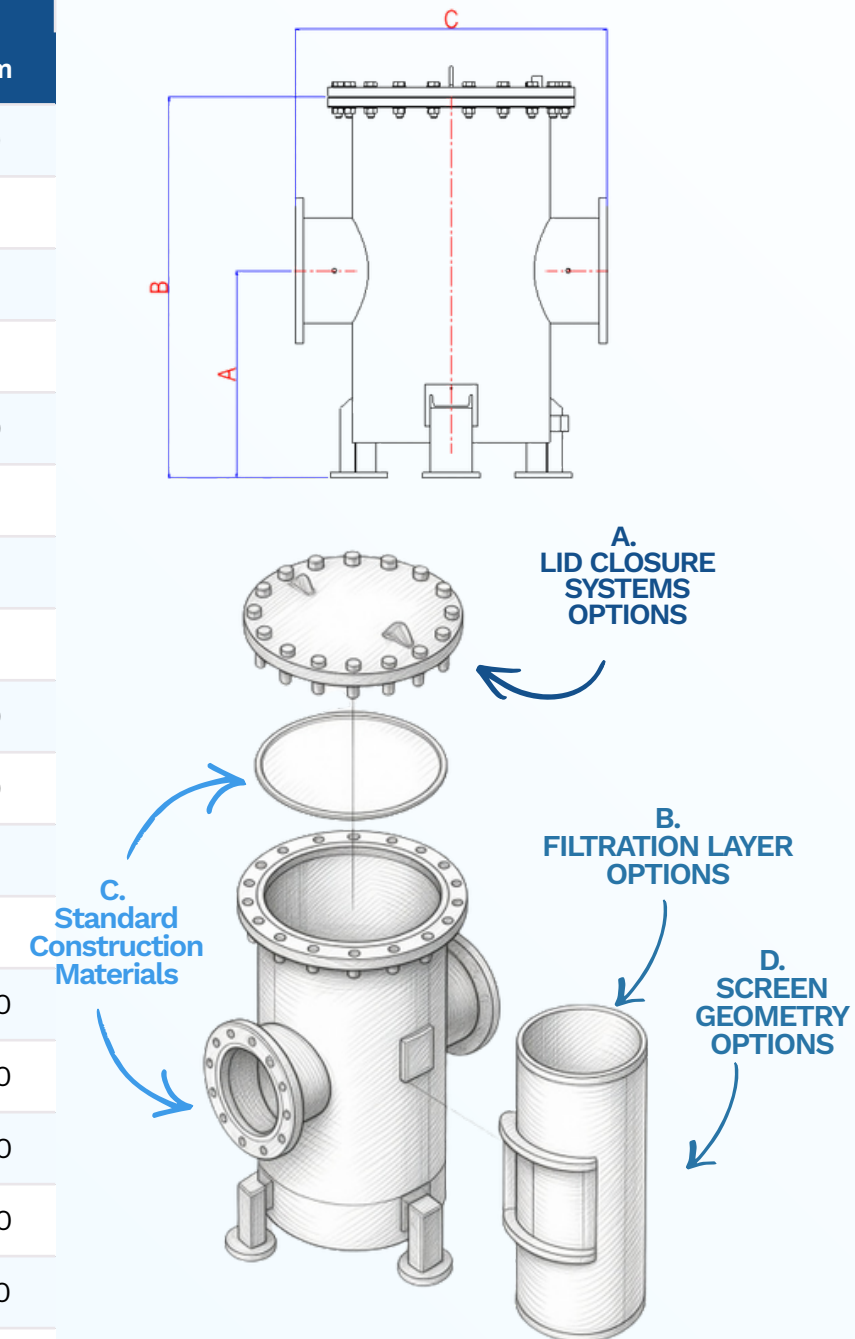
MAX TEMPERATURE
200
°C

FILTRATION
200–10,000
µm

SCREEN CONFIGURATION
Single & Multiple

ANKA BASKET STRAINERS - Complete Model Range

Filter Model	Inlet/Outlet DN	Flow Rate m ³ /h	Filtration Area cm ²	Number of Screen	Weight kg (lbs)	Air Vent / Drain	Lid Closure System	Dimensional Data		
								A* mm	B mm	C mm
ABS 32	DN32 (1 1/4")	9	195	Single	55 (121)	DN25	Type 1	190	350	300
ABS 40	DN40 (1 1/2")	12	240	Single	55 (121)	DN25	Type 1	230	370	450
ABS 50	DN50 (2")	20	350	Single	55 (121)	DN25	Type 1	280	420	450
ABS 65	DN65 (2½")	30	430	Single	57 (126)	DN25	Type 1	280	420	450
ABS 80	DN80 (3")	45	610	Single	81 (179)	DN25	Type 1	340	500	500
ABS 100	DN100 (4")	75	800	Single	83 (183)	DN25	Type 1	340	500	550
ABS 125	DN125 (5")	115	1,200	Single	134 (295)	DN25	Type 1	350	610	610
ABS 150	DN150 (6")	170	1,475	Single	137 (302)	DN25	Type 1	350	610	610
ABS 200	DN200 (8")	290	3,400	Single	269 (593)	DN40	Type 1	650	1,080	800
ABS 250	DN250 (10")	460	4,300	Single	279 (615)	DN40	Type 1	650	1,080	800
ABS 300	DN300 (12")	650	7,000	Single/Multiple	457 (1,008)	DN40	Type 1	800	1,445	950
ABS 350	DN350 (14")	800	7,600	Single/Multiple	473 (1,043)	DN40	Type 1	800	1,445	950
ABS 400	DN400 (16")	1,060	9,000	Single/Multiple	735 (1,620)	DN50	Type 1	800	1,470	1,200
ABS 450	DN450 (18")	1,355	10,000	Single/Multiple	743 (1,638)	DN50	Type 1	800	1,470	1,200
ABS 500	DN500 (20")	1,690	12,000	Single/Multiple	1,060 (2,337)	DN50	Type 3	900	1,530	1,400
ABS 600	DN600 (24")	2,500	15,500	Single/Multiple	1,260 (2,778)	DN50	Type 3	1,000	1,680	1,500
ABS 700	DN700 (28")	3,900	20,000	Single/Multiple	1,656 (3,651)	DN50	Type 3	1,000	1,880	1,700
ABS 800	DN800 (32")	4,500	25,000	Single/Multiple	2,435 (5,368)	DN65	Type 3	1,105	1,975	2,000



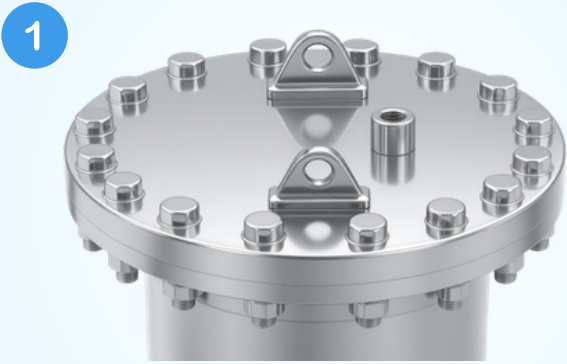
Note: Models ABS 300 and larger feature **Multiple Diagonal Screen Technology** for easier maintenance. Flow data calculated at 3,000 micron filtration with average water quality.

*A Dimension can be adjusted according to site piping elevation.

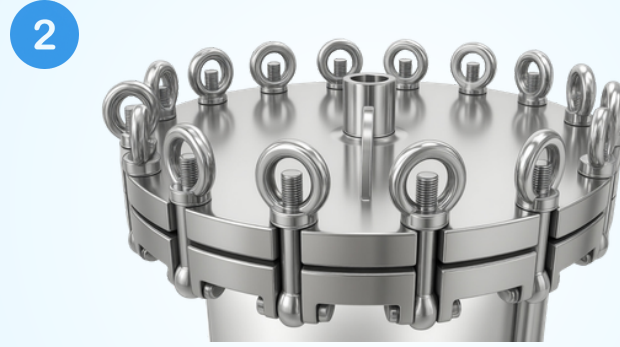
ANKA BASKET STRAINERS — CONFIGURATION MANAGER

A. LID CLOSURE SYSTEMS — Select by Model Size

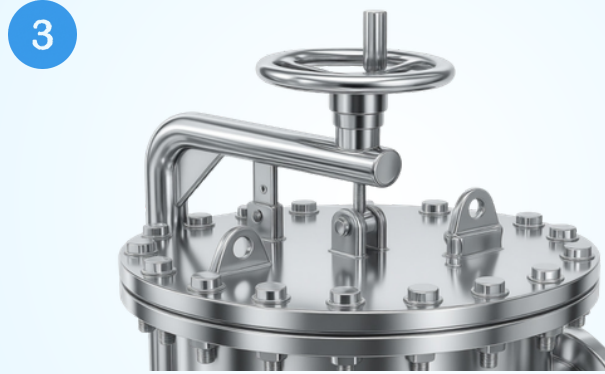
STANDARD BOLTED COVER SYSTEM



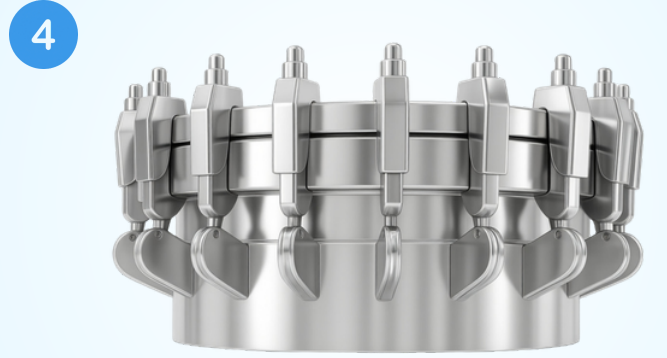
SWING-EYE BOLTS · BFS 200–450



DAVIT LID MECHANISM · BFS 500–800



RATHMANN CLAMPS · BFS 50–150



B. FILTRATION LAYER OPTIONS

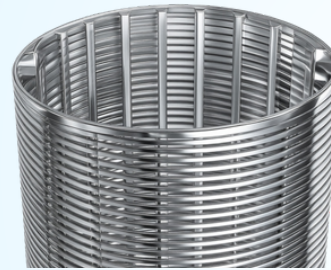
Perforated Screen



Available Ratings:
10,000 • 5,000 • 3,500 • 3,000 • 2,500 • 2,000 •

Material: SS304, SS316, Duplex, SDSS, SMO
 Design: Punched circular holes in stainless sheet
 Best for: Coarse filtration, high-flow applications, debris removal

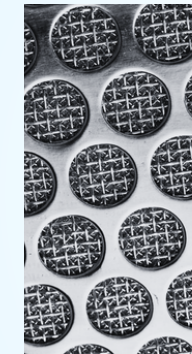
Wedge Wire Screen



Available Ratings:
800 • 500 • 300 • 200 • 100 micron

Material: SS304, SS316, Duplex, SDSS, SMO
 Design: V-shaped wires welded to support rods
 Best for: Fine filtration, non-clogging, high strength applications

Perforated Screen with Additional Mesh Layer



Perforated Screen + Mesh Layer
100 - 2000 micron

Design: Perforated plate with additional internal mesh lining
 Best for: Enhanced fine filtration & improved particle retention

C. STANDARD CONSTRUCTION MATERIALS

Housing & Lid Materials

- ✓ Carbon Steel with epoxy coating
- ✓ Stainless Steel 304/304L
- ✓ Stainless Steel 316/316L
- ✓ Super Duplex (special applications)

Screen Elements Materials

- ✓ SS304, SS316, Duplex, SDSS, SMO
- ✓ Wire Mesh Lined options
- ✓ Double Layer Reinforced for high ΔP
- ✓ Custom materials upon request

Seals & Gaskets Materials


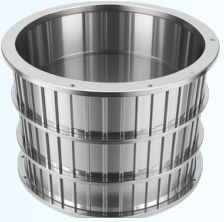


- ✓ NBR (Nitrile Rubber) - standard
- ✓ EPDM (for water applications)
- ✓ PTFE (chemical resistance)
- ✓ Viton (high temperature)

Flanges & Connections Materials

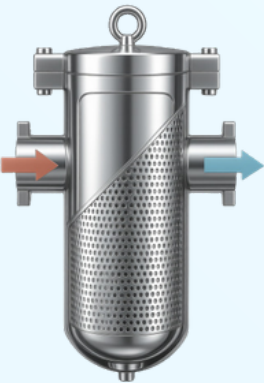
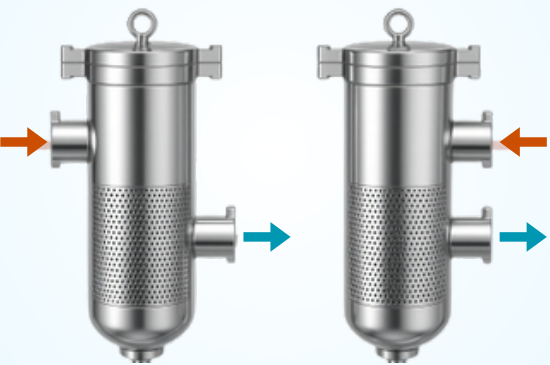
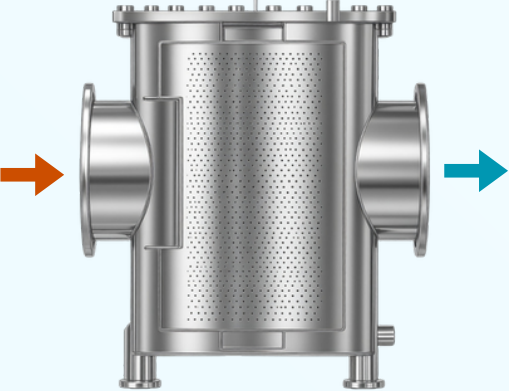
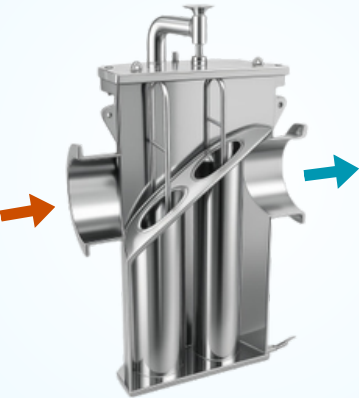
- ✓ B16.5 Class 150/300/600 SO/WN RF/FF
- ✓ EN1092-1 PN10/16/25/40 FF
- ✓ ASME B16.47 for large sizes
- ✓ Custom flange standards available



D. SCREEN GEOMETRY OPTIONS

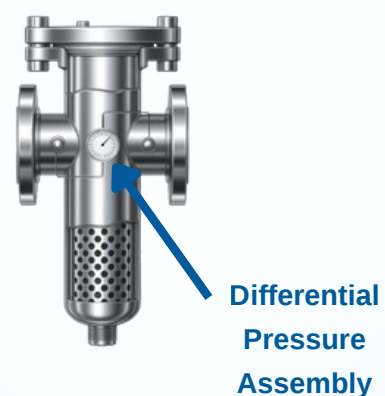
Diagonal Cut	Full Circular	Inlet Frame Cut	Multiple Diagonal Cut Screen
 <ul style="list-style-type: none"> • Bypass Avoiding Gaskets • Suitable with Inline Installation (Diagonal Cut Below) • Smaller Area in comparison with Inlet frame cut • Better Bypass Protection • Recommended Inline. • In large size filters, multiple diagonal screens are recommended. (below figure) 	 <ul style="list-style-type: none"> • Best Bypass Avoidance • Smallest Area but good for fine filtration • Flexible nozzles according to piping requirement. • Area Lost, Larger Housing Required • Structurally Strongest 	 <ul style="list-style-type: none"> • Maximum Area Ratio • Fully Inline Design(see inlet frame cut figure) • Bypass possibility exists therefore good for coarse filtration • Cost effective for pressures up to 4barg. 	 <ul style="list-style-type: none"> • Fully Inline Geometry • Strong seals due to smaller size • No Bypass • Area is increased compared to single cut screen • Spares are cheaper • Water hammer resistance is stronger due to size • Easy to maintain due to size • Smaller weight advantage during cleaning

FLOW PATTERNS

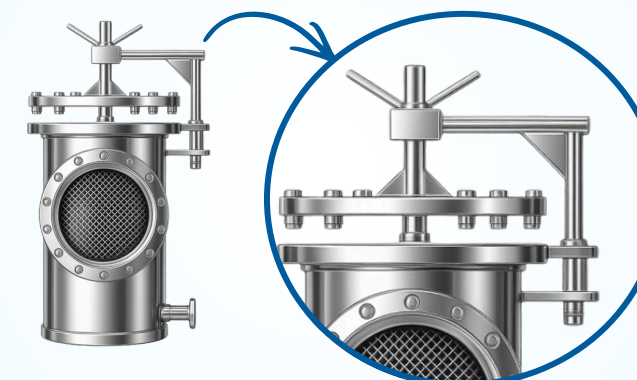
Diagonal Cut	Full Circular	Inlet Frame Cut	Multiple Diagonal Cut Screen
			

CUSTOM DESIGN FEATURES

Pressure gauges or differential pressure switches



Davit Assembly



Technical Specifications

FLOW RATES
3,500
m³/h max

CONNECTION
DN50–DN800
2" to 32"

STANDARD DESIGN PRESSURE
1 -50
barg

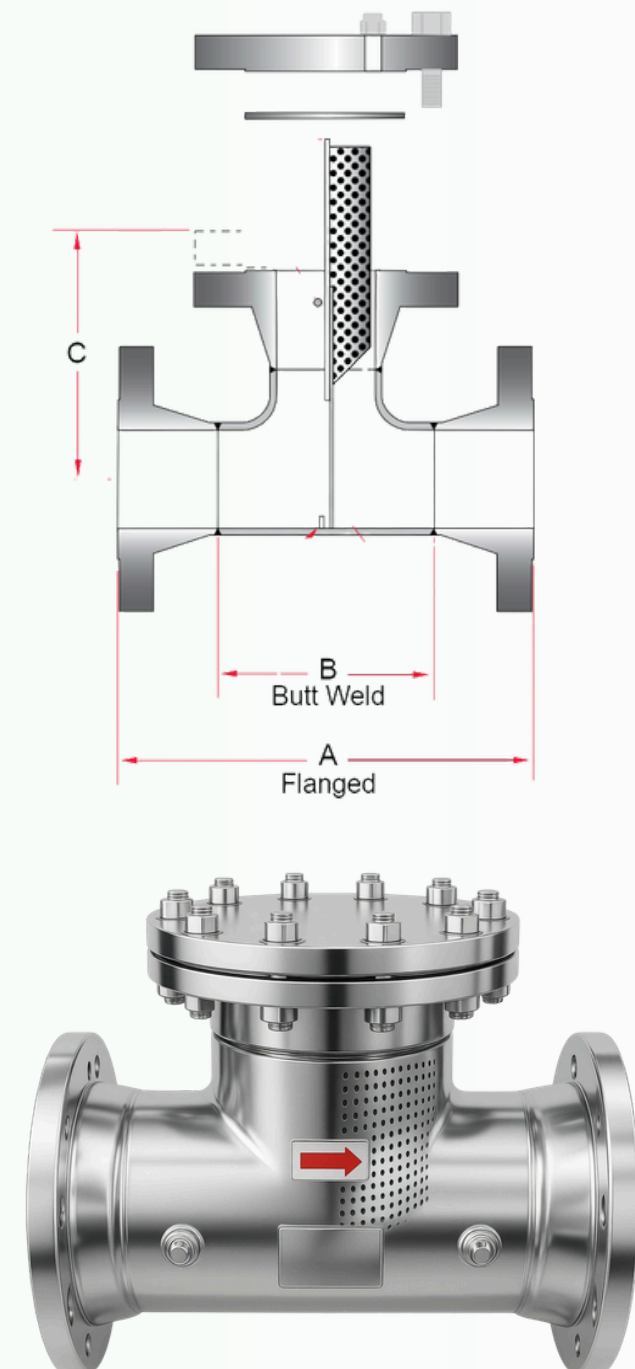
MAX TEMPERATURE
160
°C

FILTRATION
200–10,000
µm

**STANDARD BOLTED
COVER SYSTEM**

ANKA TTS, T-Type strainers features perpendicular screen chamber design providing excellent inline filtration with easy top access for maintenance. Ideal for horizontal pipeline installations where high flow capacity and frequent cleaning access are required.

Filter Model	Inlet/Outlet DN	Flow Rate m ³ /h	Filtration Area cm ²	Weight kg	Air Vent / Drain	Lid Closure System	Dimensional Data		
							A mm	B mm	C mm
ATTS 50	DN50 (2")	16	130	25	DN20	STD	260	127	150
ATTS 65	DN65 (2½")	25	180	28	DN20	STD	300	152	175
ATTS 80	DN80 (3")	35	240	32	DN20	STD	317	171	185
ATTS 100	DN100 (4")	60	360	49	DN20	STD	370	210	220
ATTS 125	DN125 (5")	90	520	67	DN20	STD	430	248	230
ATTS 150	DN150 (6")	135	680	92	DN20	STD	470	286	240
ATTS 200	DN200 (8")	250	1,100	152	DN25	STD	565	356	260
ATTS 250	DN250 (10")	370	1,500	221	DN25	STD	640	432	315
ATTS 300	DN300 (12")	530	2,200	340	DN25	STD	670	508	350
ATTS 350	DN350 (14")	640	2,400	490	DN25	STD	750	559	405
ATTS 400	DN400 (16")	850	3,100	580	DN25	STD	820	610	450
ATTS 450	DN450 (18")	1,100	4,000	725	DN25	STD	910	686	475
ATTS 500	DN500 (20")	1,350	4,700	990	DN25	STD	970	762	530
ATTS 600	DN600 (24")	2,000	6,500	1,580	DN25	STD	1,060	864	575
ATTS 800	DN800 (32")	3,500	11,000	1,750	DN25	STD	1,180	1,194	640



NOTE: Dimensions shown are (reference dimensions) for estimating purposes only. Actual dimensions will be provided on “detail” drawings, available with order. The dimensions above are only applicable with raised face weld neck (RFWN) flanges. Unless otherwise specified, the dimensions shown are applicable for class 150 rating.

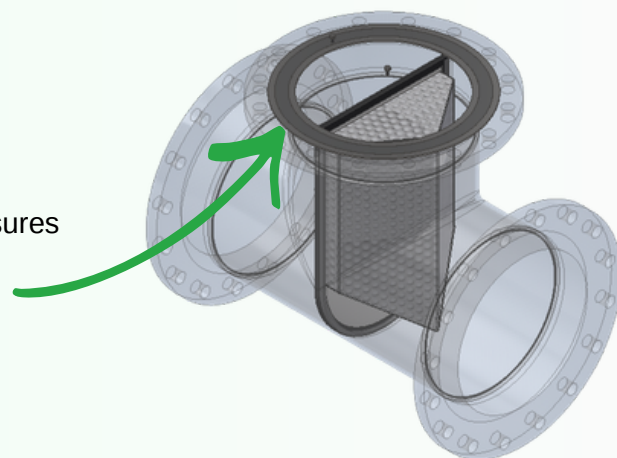
SCREEN CONFIGURATION OPTIONS

V-Type Basket Design Features

V-Type Half Screen Configuration

Key Advantages:

- ✓ Screen/Inlet area ratio exceeds 160% for maximum flow capacity
- ✓ Reinforced structure withstands high differential pressures
- ✓ U-type EPDM seals mounted directly on screen body
- ✓ Perforated SS304 construction for durability
- ✓ Half-screen design optimized for horizontal flow
- ✓ Easy removal through top access flange



Zero Bypass Technology

Sealing Mechanism:

- ✓ U-type EPDM gaskets create positive seal
- ✓ Gaskets mounted on basket perimeter, not housing
- ✓ Compression seal prevents any unfiltered bypass
- ✓ Spiral wound gasket on access flange
- ✓ Dual-seal design for critical applications



LID CLOSURE SYSTEMS — Select by Model Size

STANDARD BOLTED COVER SYSTEM



DAVIT LID MECHANISM



STANDARD CONSTRUCTION MATERIALS

Housing & Lid

- ✓ Carbon Steel with epoxy coating
- ✓ Stainless Steel 304/304L
- ✓ Stainless Steel 316/316L
- ✓ Super Duplex (special applications)

Screen Elements

- ✓ SS304 (SS316, Duplex optional)
- ✓ Wire Mesh Lined options
- ✓ Double Layer Reinforced for high ΔP
- ✓ Custom materials upon request

Seals & Gaskets

- ✓ NBR (Nitrile Rubber) - standard
- ✓ EPDM (for water applications)
- ✓ PTFE (chemical resistance)
- ✓ Viton (high temperature)

Flanges & Connections

- ✓ B16.5 Class 150/300/600 SO/WN RF/FF
- ✓ EN1092-1 PN10/16/25/40 FF
- ✓ ASME B16.47 for large sizes
- ✓ Custom flange standards available



Technical Specifications

FLOW RATES

1,400
m³/h max

CONNECTION
DN50–DN600
2" to 24"

Operating Pressure
1-50
barg

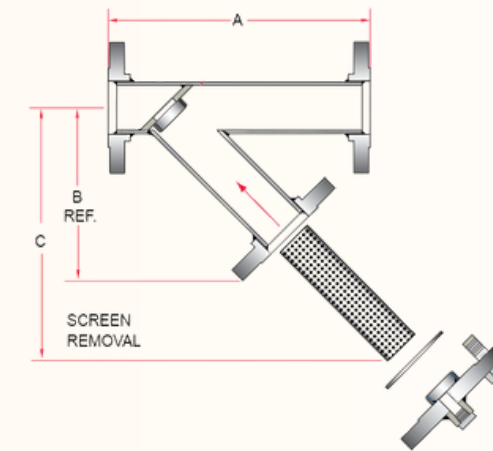
Operating Temperature
200
°C

FILTRATION
200–10,000
µm

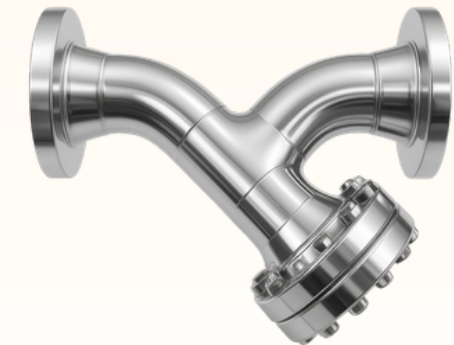
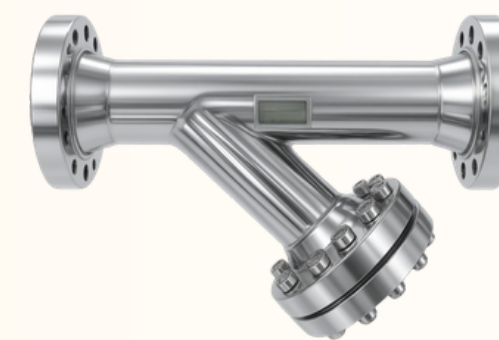
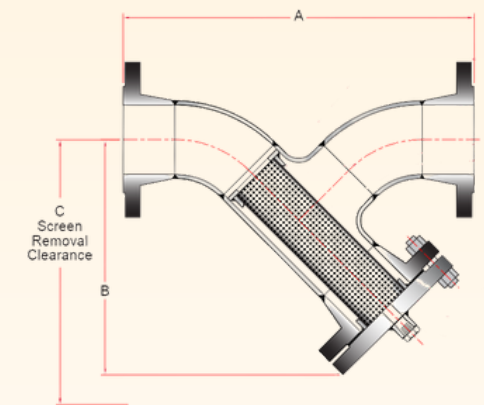
Carbon Steel
Stainless Steel

ANKA YTS Series - Complete Model Range

Filter Model	Inlet/Outlet DN	Flow Rate m ³ /h	Filtration Area cm ²	Dimensional Data						Filtration Area cm ²
				A	B	C	With Standard Butt-weld Fittings			
							A	B	C	
AYTS 50	DN50 (2")	14	240	337	229	305	305	216	305	210
AYTS 65	DN65 (2½")	22	340	399	270	359	330	254	356	280
AYTS 80	DN80 (3")	30	450	435	294	397	381	279	419	390
AYTS 100	DN100 (4")	50	700	518	346	470	457	330	457	600
AYTS 125	DN125 (5")	75	1050	624	403	572	457	368	533	780
AYTS 150	DN150 (6")	110	1430	705	451	648	610	406	584	930
AYTS 200	DN200 (8")	180	2350	889	559	787	762	533	762	1630
AYTS 250	DN250 (10")	280	3500	1051	657	933	864	584	838	2550
AYTS 300	DN300 (12")	395	4950	1238	770	1089	914	610	965	1500
AYTS 350	DN350 (14")	475	6210	1408	856	1203	914	775	1092	4000
AYTS 400	DN400 (16")	620	7920	1554	938	1343	1056	813	1295	4600
AYTS 450	DN450 (18")	780	10050	1740	1040	1511	1168	889	1448	6000
AYTS 500	DN500 (20")	970	12768	1988	1145	1664	1257	991	1549	7500
AYTS 600	DN600 (24")	1400	17270	2216	1311	1861	1483	1118	1778	9700

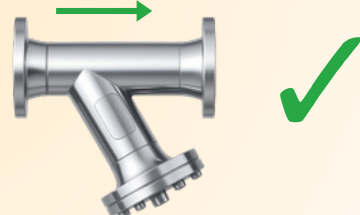


With Standard Butt-weld Fittings

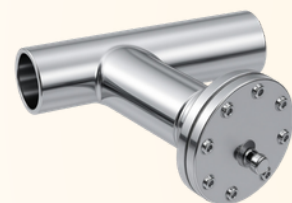


STRAINERS STANDARD PRODUCTION

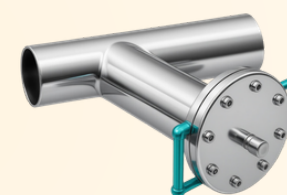
1. Installation



2. Cover Options



Bolted Cover
Standard
removable cover



Bolted Cover with Hinge
Easy opening,
maintenance-friendly

3. Materials of Construction

- ✓ Carbon Steel (ASTM A105, P265GH)
- ✓ Stainless Steel 304/304L
- ✓ Stainless Steel 316/316L

Technical Specifications

FLOW RATES
2,100
m³/h max

CONNECTION
DN50–DN600
2" to 24"

STANDARD DESIGN PRESSURE
100
barg

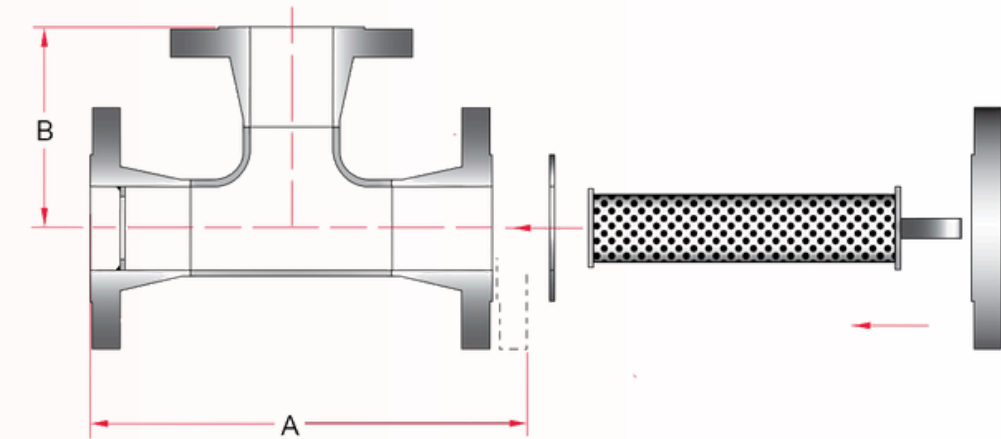
MAX TEMPERATURE
200
°C

FILTRATION
200–10,000
µm

STANDARD BOLTED COVER SYSTEM

ANKA FTS Series - Complete Model Range

Filter Model	Inlet/Outlet DN	Flow Rate m ³ /h	Filtration Area cm ²	Air Vent / Drain	Lid Closure System	Dimensional Data	
						A mm	B mm
AFTS 32	DN32 (1 1/4")	8	65	DN25	STD	320	150
AFTS 50	DN50 (2")	17	120	DN25	STD	280	130
AFTS 65	DN65 (2½")	26	175	DN25	STD	320	150
AFTS 80	DN80 (3")	37	220	DN25	STD	340	155
AFTS 100	DN100 (4")	65	350	DN25	STD	390	180
AFTS 125	DN125 (5")	100	485	DN25	STD	455	215
AFTS 150	DN150 (6")	140	650	DN25	STD	495	230
AFTS 200	DN200 (8")	250	1,100	DN40	STD	590	280
AFTS 250	DN250 (10")	390	1,500	DN40	STD	670	320
AFTS 300	DN300 (12")	560	2,000	DN40	STD	770	370
AFTS 350	DN350 (14")	680	2,400	DN40	STD	850	410
AFTS 400	DN400 (16")	900	3,000	DN50	STD	900	430
AFTS 450	DN450 (18")	1,150	3,800	DN50	STD	1,000	485
AFTS 500	DN500 (20")	1,450	4,500	DN50	STD	1,100	530
AFTS 600	DN600 (24")	2,100	6,100	DN50	STD	1,220	585



Materials of Construction

- ✓ Carbon Steel (ASTM A105, P265GH)
- ✓ Stainless Steel 304/304L
- ✓ Stainless Steel 316/316L

STANDARD BOLTED COVER SYSTEM

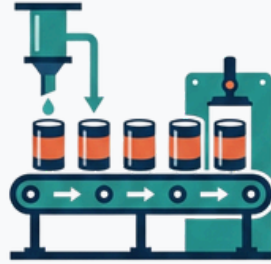


Note: Larger sizes available. Manufacturer reserves the right to modify dimensions, materials, or design. Consult factory for certification.

Industries We Serve



Sewage Treatment Industry



Food Processing Facilities



Cement Manufacturing



Chemical Plants



Petrochemical



Mining Operations



Pulp and Paper



Steel Mills

Why Choose Us



Engineering Excellence

Over 20 years of experience in pressure vessel and filtration equipment design and manufacturing. Our engineering team provides custom solutions tailored to your specific requirements.

Quality Assurance

All products manufactured to international standards (ASME, PED, EN13445) with comprehensive testing and third-party inspection. Full material traceability and documentation.



Global Support

Technical support, installation guidance, and after-sales service provided worldwide. Extensive spare parts inventory and fast delivery to minimize downtime.

Get in touch with us today!

EMAIL

info@pressurevesselequipment.com

WEBSITE

<https://www.pressurevesselequipment.com>

PHONE

+90 541 925 20 14

ADDRESS

İvedik OSB, İvedik Organize Sanayi Bölgesi,
1364. Sk. No:12, 06378 Yenimahalle/Ankara

Head Office
İvedik OSB, İvedik Organize Sanayi Bölgesi, 1364. Sk. No:12, 06378 Yenimahalle/Ankara

Manufacturing Facility
Malıköy Başkent OSB, 19. Cd. No:58, 06909 Sincan/Ankara

